

In-Line Check Valves

Precautionary Note For All In-Line Check Valves

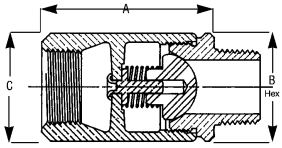
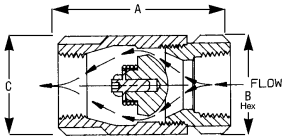
Not recommended for use with reciprocating pumps and similar applications which may induce repetitious vibrations. Low flow rates which do not fully open the valve, may result in undesirable noise and premature valve failure. Upstream flow disturbances, which create turbulence, may also result in rapid wear. Therefore, it is recommended that a minimum of 10 diameters of straight pipe be provided between the check valve and any upstream flow disturbances such as pumps, control valves, elbows, etc.

61-100, 61-200 & 62-100 Series

Ball-Cone® Check Valves

Patented design (U.S. Pat. No. 4,172,465) with reinforced ball-cone check and stainless steel springs, these valves offer exceptional resistance to chemicals and corrosion. No radial alignment is needed.

- 1/2" psi opening pressure
- Bronze sizes from 1/4" to 3"; stainless steel sizes 1/4" to 2"
- Tight shut-off with liquid media
- 125 psig steam rating
- Straight-through design minimizes flow changes
- See PRECAUTIONARY NOTE
- See OPTIONS below



Bronze FNPT x FNPT	Bronze MNPT x FNPT	SS FNPT x FNPT	Size (In.)	Dimensions (In.)			61 Series Wt./100	62 Series Wt./100
				A	B	C		
61-101	61-201	62-101	1/4	2.06	1.12	1.12	38	38.3
61-102	61-202	62-102	3/8	2.12	1.12	1.12	38	37.3
61-103	61-203	62-103	1/2	2.31	1.12	1.12	38	36.3
61-104	61-204	62-104	3/4	2.87	1.37	1.50	75	76.6
61-105	61-205	62-105	1	3.50	1.75	1.94	145	145.0
61-106	61-206	62-106	1-1/4	4.19	2.12	2.37	275	237.5
61-107	61-207	62-107	1-1/2	4.94	2.50	2.81	394	381.3
61-108	61-208	62-108	2	6.00	3.00	3.69	630	636.0
61-109	-	-	2-1/2	7.00	3.50	4.50	1400	-
61-100	-	-	3	8.12	4.12	5.31	1665	-

Options Available On Request Suffix
 - 5 psig opening pressure -E05
 - 10 psig opening pressure -E10
 - Light spring
 (for light spring replace 0 in fourth digit with 2)
 - Oxygen clean -57
 - Nitrile seat -B1
 (soft seat checks only)

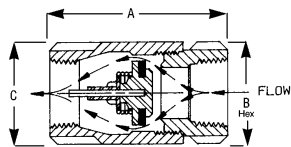
Pressure Temperature Ratings Degrees (F)	PSIG
-20 to 100	400
200	200
250	160
275	150
300	140
325	130
353	125

61-500 & 62-500 Series

Soft Seat Check Valves

Fabricated with stainless steel springs and elastomeric seats. No radial alignment is needed. Exceptional resistance to chemicals and corrosion. Spring is fully shielded from flow.

- Bronze sizes: 1/4" to 2"
- Stainless steel sizes: 1/4" to 1"
- Bubble-tight shutoff, ideally suited for gaseous service
- Straight-through design minimizes flow changes
- NPT threaded; 400 psig WOG
- Retainer is notched for easy identification
- Check is spring loaded for fast seating action; approximate opening pressure 1/2 psi
- See "PRECAUTIONARY NOTE"



Bronze FNPT x FNPT	SS FNPT x FNPT	Size (In.)	Dimensions (In.)			61 Series Wt./100	62 Series Wt./100
			A	B	C		
61-501	62-501	1/4	2.31	1.12	1.12	38	38
61-502	62-502	3/8	2.31	1.12	1.12	38	38
61-503	62-503	1/2	2.31	1.12	1.12	38	38
61-504	62-504	3/4	2.87	1.37	1.50	75	75
61-505	62-505	1	3.50	1.75	1.94	145	150
61-506	-	1-1/4	4.19	2.12	2.37	275	-
61-507	-	1-1/2	4.94	2.50	2.81	394	-
61-508	-	2	6.00	3.00	3.69	630	-

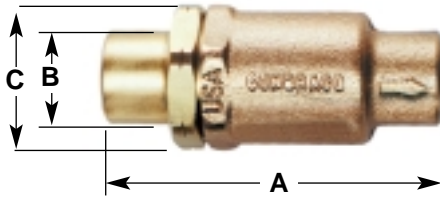
In-Line Check Valves

61-600 Series

Solder End Soft Seat Check Valves

All bronze with stainless steel springs and elastomeric seats. No radial alignment is needed. Exceptional resistance to corrosion. Spring fully shielded from flow.

- Sizes: 1/2" to 2"
- Bubble-tight shutoff, ideally suited for gaseous service
- Straight-through design minimizes flow changes
- Solder end; 400 psig WOG
- Check is spring loaded for fast seating action; approximate opening pressure 1/2 psi
- See "PRECAUTIONARY NOTE"
- Retainer is notched for easy identification

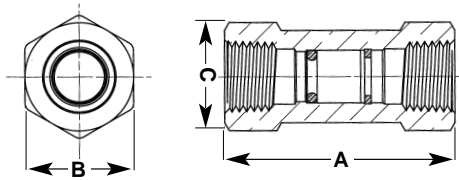


Model Number	Size (In.)	Dimensions (In.)			Wt./100 (Lbs.)
		A	B	C	
61-603	1/2	2.75	1.12	1.25	138
61-604	3/4	3.68	1.20	1.62	175
61-605	1	4.50	1.93	2.12	145
61-606	1-1/4	6.11	2.13	2.38	330
61-607	1-1/2	6.87	2.50	2.81	0610
61-608	2	7.46	3.38	3.75	1010

61-700 Series

Brass NPT Mini Check Valves

Ideally suited for all OEM applications where space is a premium. Excellent for use on water and air. They feature a bubble-tight soft seat design with a very light loaded stainless steel spring.



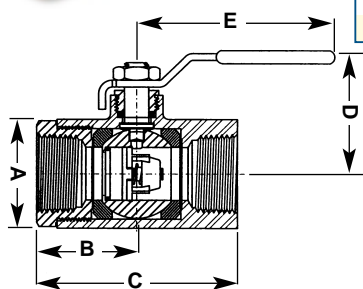
Model Number	Size (In.)	Dimensions (In.)			Wt./100 (Lbs.)
		A	B	C	
61-701-01	1/4	1.72	0.81	0.92	22
61-702-01	3/8	1.79	0.93	1.05	29
61-703-01	1/2	2.02	1.06	1.17	38
61-704-01	3/4	2.50	1.25	1.40	54
61-705-01	1	2.95	1.62	1.76	110

70-100-BC Series

Unidirectional Ball Valve with Integral Check

Rugged ball valve for all water systems not exceeding 250 psig. Combination positive shut-off valve with bubble-tight check capability; perfect where space savings is required.

- Ideal for O.E.M. applications
- FNPT threaded connections
- Sizes 1/2" to 2"
- Lever handle standard
- Rated 250 psig
- Adjustable packing gland



Model Number	Size (In.)	Dimensions (In.)					Wt. Ea. (Lbs.)
		A	B	C	D	E	
70-103-BC	1/2	0.42	1.11	2.22	1.80	3.87	0.63
70-104-BC	3/4	0.45	1.50	3.00	2.12	4.87	1.33
70-105-BC	1	0.59	1.68	3.37	2.25	4.87	1.77
70-106-BC	1-1/4	0.75	2.00	4.00	2.73	5.50	3.29
70-107-BC	1-1/2	1.02	2.14	4.31	3.09	8.00	4.63
70-108-BC	2	1.27	2.35	4.68	3.28	8.00	6.01

Suffix	Option
-02	Static Grounded
-03	1-1/4" Stem Extension
-04	2-1/4" Stem Extension
-07	Tee Handle
-08	90° Reversed Stem

Suffix	Option
-10	SS Lever and Nut
-15	Round Handle
-17	Rough Chrome Plating
-27	Latch Lock Lever
-32	SS Tee Handle and Nut
-45	Less Lever and Nut